



CABINET HARDWARE SYSTEMS

TOILET PARTITION HARDWARE

#TPH

Australia

1800 008 591 ■ www.artia.com.au

VICTORIA:

235 Settlement Road,
Thomastown VIC 3074

NEW SOUTH WALES:

6 Nello Place
Wetherill Park NSW 2164

QUEENSLAND:

Building 2/660 MacArthur
Avenue, Pinkenba QLD 4008

SOUTH AUSTRALIA:

13 Rosberg Road,
Wingfield SA 5013

WESTERN AUSTRALIA:

Unit 5/1 Dellamarta Road,
Wangara WA 6065

New Zealand

0800 267 625 ■ www.artia.co.nz

AUCKLAND:

11 Bruce Roderick Drive,
East Tamaki, Auckland 2013

CHRISTCHURCH:

117 Wrights Road,
Addington, Christchurch 8024

TOILET PARTITION HARDWARE

CONTENTS

▪ Metlam TOILET PARTITION KITS	03
▪ "MODA" – Satin Chrome-Plated	03
▪ "MODA" – Designer Black	03
▪ "106" – Satin Chrome-Plated	04
▪ Spring Hinge "MODA"	04
▪ Metlam TOILET PARTITION HINGES	05
▪ Stainless Steel Spring Hinge	05
▪ Gravity Hinge "106"	05
▪ Metlam TOILET PARTITION LOCKS	06
▪ Toilet Partition Lock "MODA"	06
▪ Toilet Partition Lock "EASY FIT"	06
▪ Toilet Partition Lock "200"	07
▪ "Z" Lift-Off Staple	07
▪ Metlam TOILET PARTITION BUMPERS	07
▪ Toilet Partition Bumper "MODA"	07
▪ Toilet Partition Bumper "107"	07
▪ Metlam TOILET ROLL HOLDER	08
▪ Toilet Roll Holder "113"	08
▪ Metlam TOILET PARTITION HOOKS	08
▪ Hat & Coat Hook "MODA"	08
▪ Hat & Coat Hook "202"	08
▪ Metlam TOILET PARTITION LEGS	09
▪ Toilet Partition Leg "112"	09
▪ Toilet Partition Leg Bracket "122"	09
▪ Toilet Partition Leg "110"	09
▪ Toilet Partition Leg "120"	10
▪ Metlam CHANNELS & INSERTS	10
▪ Toilet Partition Channels & Inserts – 18mm Board	10
▪ Toilet Partition Channels & Inserts – 13mm Compact Laminate Board	10
▪ Toilet Partition Channels & Inserts – Designer Black	11
▪ Metlam INSTALLATION ACCESSORIES	11
▪ Assembly Fittings – Acorn / D-nuts	11
▪ Assembly Fittings – Allthreads	11
▪ Metlam INSTALLATION ACCESSORIES	12
▪ Gravity Hinge Faceplates	12
▪ Corner Bracket	12
▪ Stainless Steel Hinge Faceplates	12
▪ Metlam AMBULANT COMPLIANCE	13
▪ Signage	13
▪ Grab rail	13
▪ Grab rail fixing plates	13
▪ D-Handle	13

TOILET PARTITION HARDWARE

METLAM TOILET PARTITION KITS

► "MODA" – Satin Chrome-Plated



- Premium toilet partition hardware for a design edge in the wash-room
 - Complete kit
 - Perfectly matching hardware components
 - Concealed screw-fix – no visible fixings
 - Suitable for a range of material thickness
- Supplied with "Moda" Spring Hinges
 - Specify handing (please select acc. to requirements)
 - Reversible on-site for 'hold open' or 'hold closed'
 - Spring tension adjustable from 'no tension' to 'fully tensioned' (six steps)
 - Surface mounted screw-fix (fixings not supplied)
 - For optimum performance allow 15kg door weight per hinge
 - Two hinges for doors <30kg
 - For doors >30kg allow 15kg per hinge
 - Additional hinges available to order (776_MODAHINGE)
- The "Moda" kit includes:
 - 1 x pair "Moda" spring hinges
 - 1 x "Moda" door bumper
 - 1 x "Moda" lock set (incl. slide bolt, lift-off staple, square indicator)
 - 1 x "Moda" coat hook
- Satin chrome-plated finish



Code	Handing
776_MODAKIT_A_SCP	iLH/oRH - LH viewed from the inside, RH viewed from the outside
776_MODAKIT_B_SCP	iRH/oLH - RH viewed from the inside, LH viewed from the outside

► "MODA" – Designer Black



- Premium toilet partition hardware for a design edge in the washroom
 - Complete kit
 - Perfectly matching hardware components
 - Concealed screw-fix – no visible fixings
 - Suitable for a range of material thickness
- Supplied with "Moda" Spring Hinges
 - Specify handing (please select acc. to requirements)
 - Reversible on-site for 'hold open' or 'hold closed'
 - Spring tension adjustable from 'no tension' to 'fully tensioned' (six steps)
 - Surface mounted screw-fix (fixings not supplied)
 - For optimum performance allow 15kg door weight per hinge
 - Two hinges for doors <30kg
 - For doors >30kg allow 15kg per hinge
 - Additional hinges available to order (776_MODAHINGE)
- The "Moda" kit includes:
 - 1 x pair "Moda" spring hinges
 - 1 x "Moda" door bumper
 - 1 x "Moda" lock set (incl. slide bolt, lift-off staple, square indicator)
 - 1 x "Moda" coat hook
- Designer black



Code	Handing
776_MODAKIT_A_BLK	iLH/oRH - LH viewed from the inside, RH viewed from the outside
776_MODAKIT_B_BLK	iRH/oLH - RH viewed from the inside, LH viewed from the outside

TOILET PARTITION HARDWARE

METLAM TOILET PARTITION KITS

► "106" – Satin Chrome-Plated



- Economy toilet partition hardware
 - Complete kit, ideal for renovations
 - Suitable for a range of material thickness
- Supplied with Gravity Hinges
 - Please select acc. to requirements
 - Handing
 - 'Hold' open' or 'hold closed'
 - Supplied as screw-fix for ease of installation (fixings not included)
 - Convertible for bolt-through with optional Allthread and D-nuts (order separately)
 - For optimum performance allow 15kg door weight per hinge
 - Two hinges for doors <30kg
 - For doors >30kg allow 15kg per hinge
 - Additional hinges available to order (776037_1 / 776038_1 / 776039_1 / 776040_1)
- Set includes:
 - 1 x pair "106" gravity hinges
 - 1 x door bumper
 - 1 x EasyFit lock (incl. turndial, lift-off staple, round indicator)
 - 1 x coat hook
- Satin chrome-plated finish



Code	Handing	Hold
776245_1	iRH/oLH - RH viewed from the inside, LH viewed from the outside	open
776250_1	iLH/oRH - LH viewed from the inside, RH viewed from the outside	open
776255_1 ^	iRH/oLH - RH viewed from the inside, LH viewed from the outside	closed
776260_1 ^	iLH/oRH - LH viewed from the inside, RH viewed from the outside	closed

GRAVITY HINGES have no mechanical components and therefore assist the door to move to Hold Open or Hold Closed Position. Hinge speed cannot be adjusted.

^ not stocked, available as special buy-in (longer lead times may apply)

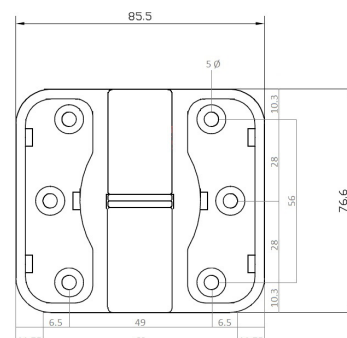
► Spring Hinge "MODA"



- Supplied as single hinge ("each")
- Please select handing acc. to requirements
- Reversible on-site for 'hold open' or 'hold closed'
- Spring tension adjustable from 'no tension' to 'fully tensioned' (six steps)
- Surface mounted concealed screw-fix (fixings not supplied)
- For optimum performance allow 15kg door weight per hinge
 - Two hinges for doors <30kg
 - For doors >30kg allow 15kg per hinge
 - Additional hinges available to order (776_MODAHINGE)



Code	Handing	Finish
776_MODAHINGE_A_SCP	iLH/oRH - LH viewed from the inside, RH viewed from the outside	Satin chrome-plated
776_MODAHINGE_B_SCP	iRH/oLH - RH viewed from the inside, LH viewed from the outside	Satin chrome-plated
776_MODAHINGE_A_BLK	iLH/oRH - LH viewed from the inside, RH viewed from the outside	Designer black
776_MODAHINGE_B_BLK	iRH/oLH - RH viewed from the inside, LH viewed from the outside	Designer black



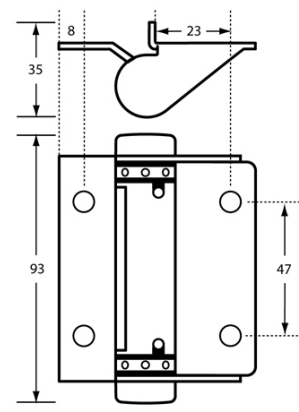
TOILET PARTITION HARDWARE

METLAM TOILET PARTITION HINGES

► Stainless Steel Spring Hinge



- Heavy duty hinge for heavy doors
- Please select
 - 'Hold open' or 'hold closed' acc. to requirements
- Spring assisted, adjustable
- Supplied as single hinge ("each")
- Suitable for screw-fix (fixings not supplied) or bolt-through (order Allthread and D-nuts are required)
- For optimum performance allow 20kg door weight per hinge
 - Two hinges for doors <40kg
 - For doors >40kg allow 40kg per hinge

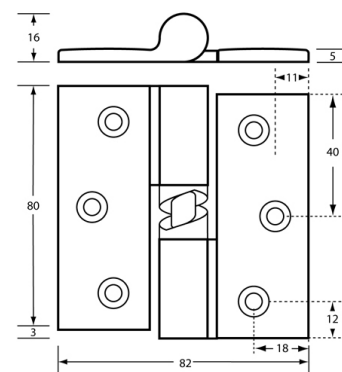


Code	Handing	Hold	Supplied
776305_1	iRH/oLH - RH viewed from the inside, LH viewed from the outside	open	each
776310_1	iLH/oRH - LH viewed from the inside, RH viewed from the outside	open	each

► Gravity Hinge "106"



- Supplied as
 - Individual hinge ("each")
 - Screw-fix for ease of installation (fixings not included)
- Convertible for bolt-through with optional Allthread and D-nuts (use own fixings, 776x Allthreads not suitable)
- For optimum performance allow 15kg door weight per hinge
- Please select acc. to requirements
 - Handing
 - 'Hold' open' or 'hold closed'



Code	Handing	Hold
776037_1	iLH/oRH - LH viewed from the inside, RH viewed from the outside	open
776038_1	iRH/oLH - RH viewed from the inside, LH viewed from the outside	open
776039_1	iLH/oRH - LH viewed from the inside, RH viewed from the outside	closed
776040_1	iRH/oLH - RH viewed from the inside, LH viewed from the outside	closed

TOILET PARTITION HARDWARE

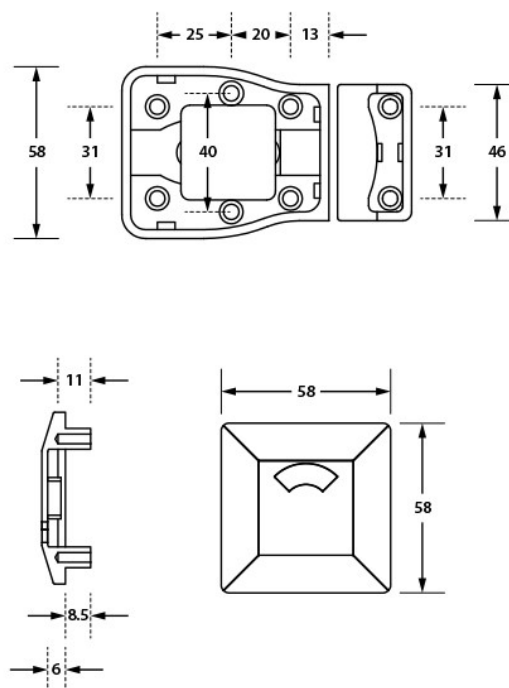
METLAM TOILET PARTITION LOCKS

► Toilet Partition Lock "MODA"



- Set consisting of
 - Easy-glide slide lock, to support use with restricted hand mobility or limb loss. Improved hygiene protection.
 - Matching lift-off staple
 - Square indicator with large eyelet
- Surface mounted with concealed screw-fix
 - "No backing plate" design for on-door adjustment to ensure smooth fit

Code	Finish
776_MODALOCK_SCP	Satin chrome-plated
776_MODALOCK_BLK	Designer black

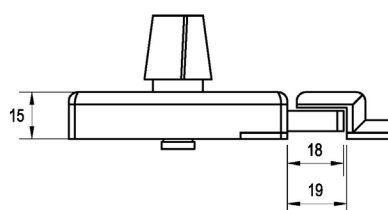
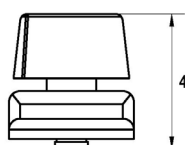
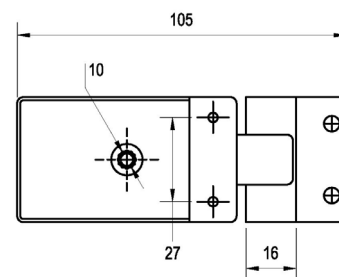
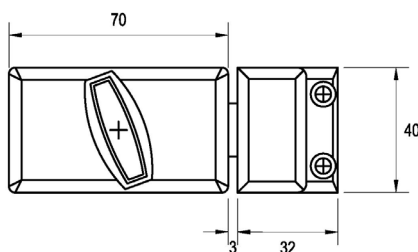


► Toilet Partition Lock "EASY FIT"



- Contemporary design with simple lock installation
- Can be installed to door with and without channel edging
- Set consisting of
 - Turn bolt on rectangular plate
 - Matching lift-off staple
 - Round indicator with large eyelet
- Partially concealed screw-fix

Code	Finish
776_EASYFITLOCK_SCP	Satin chrome-plated



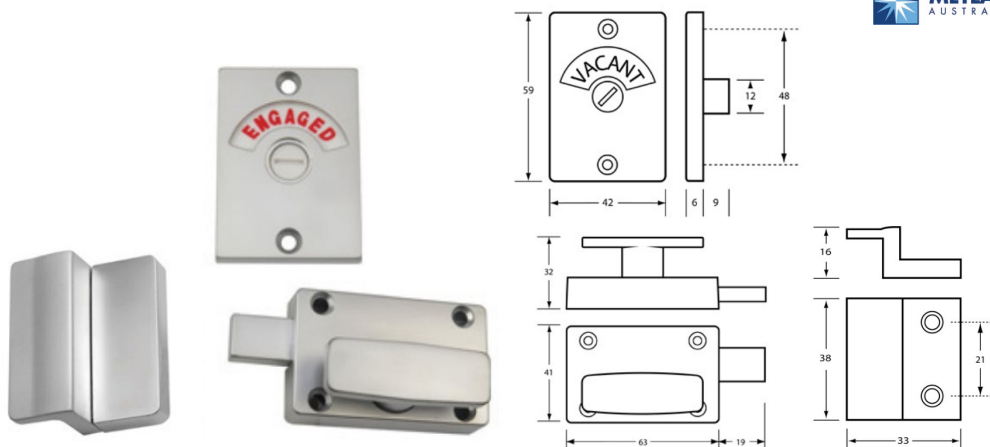
TOILET PARTITION HARDWARE

METLAM TOILET PARTITION LOCKS

► Toilet Partition Lock "200"

- Set consisting of
 - Turn bolt on rectangular plate
 - Lift-off staple
 - Rectangular indicator with clear text
- Screw-fix (exposed)

Code	Finish
776052_1	Satin chrome-plated

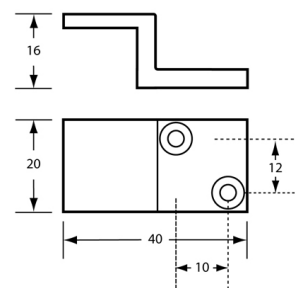


► "Z" Lift-Off Staple

- For safety compliance, to update existing toilet partitions to lift-off doors
 - Works in conjunction with gravity hinges
- Screw-fix
- Satin chrome-plated

Code	Width	Height	Finish
776049 ^	40	20	Satin chrome-plated

^ not stocked, available as special buy-in (longer lead times may apply)

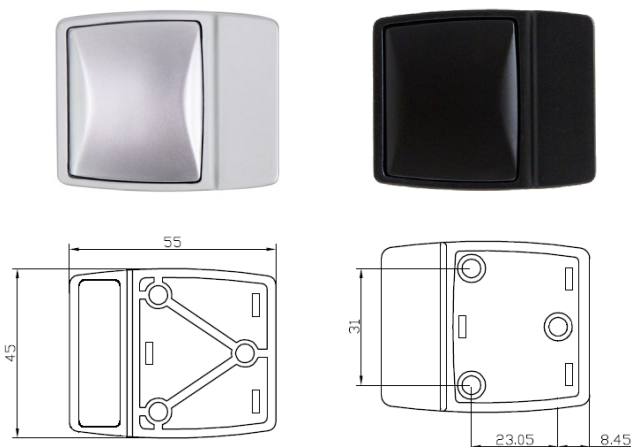
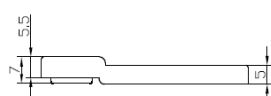


METLAM TOILET PARTITION BUMPERS

► Toilet Partition Bumper "MODA"

- Perfectly matching "MODA" toilet partition hardware
- Rubber insert to cushion door
- Concealed screw-fix

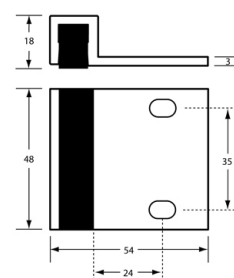
Code	Finish
776_MODABUMPER_SCP	Satin chrome-plated
776_MODABUMPER_BLK	Designer black



► Toilet Partition Bumper "107"

- Rubber insert to cushion door
- Exposed screw-fix

Code	Finish
776059_SF	Satin chrome-plated



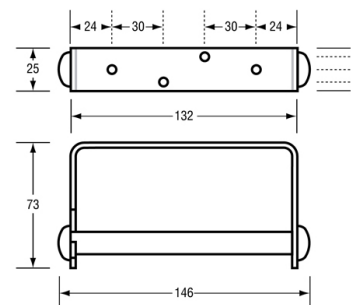
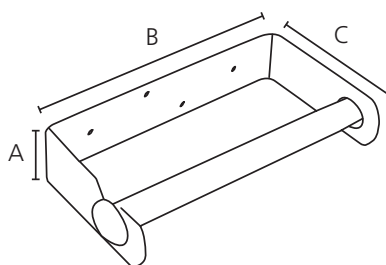
TOILET PARTITION HARDWARE

METLAM TOILET ROLL HOLDER

► Toilet Roll Holder "113"

- 304 Grade stainless steel
- Economical, simple design
- Brushed stainless steel finish
- Screw-fix

Code	A	B	C
776069	25	135	70

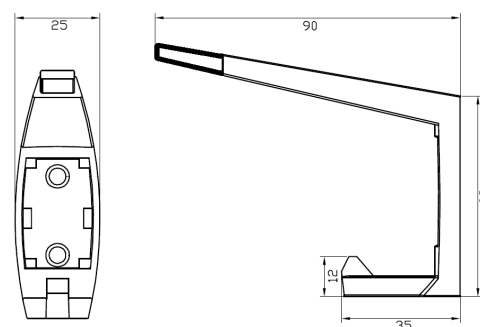


METLAM TOILET PARTITION HOOKS

► Hat & Coat Hook "MODA"

- Concealed screw-fix (supplied without fixings)
- Load capacity 8kg
- Recommended clearance to other fixtures 150mm
- Rubber bumper to protects walls or partition surfaces from being damaged
- Suitable for installations in ambulant bathrooms

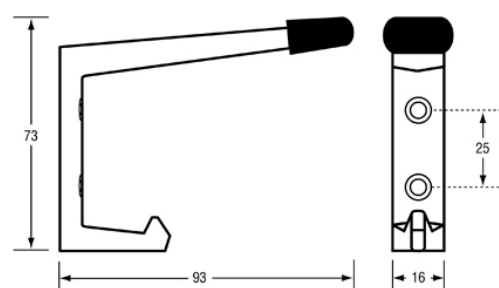
Code	Finish
776_MODAHOOK_SCP	Satin chrome-plated
776_MODAHOOK_BLK	Designer black



► Hat & Coat Hook "202"

- Screw-fix (supplied without fixings)
- Load capacity 8kg
- Recommended clearance to other fixtures 150mm
- Rubber bumper to protects walls or partition surfaces from being damaged
- Suitable for installations in ambulant bathrooms

Code	Finish
776043	Satin chrome-plated



TOILET PARTITION HARDWARE

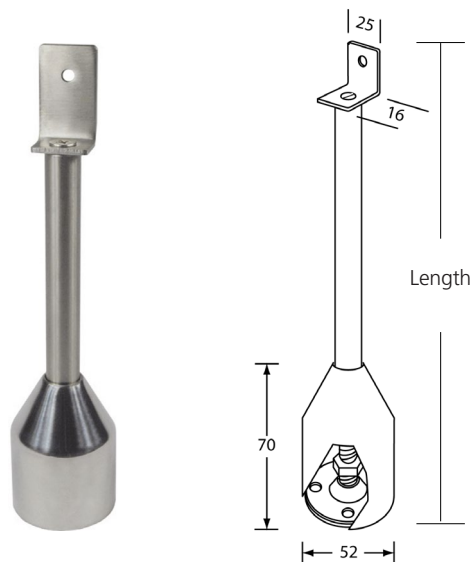
METLAM TOILET PARTITION LEGS

► Toilet Partition Leg "112"

- To create off-floor toilet partitions
- Angle support bracket
- Designed for 18mm board
- 200mm long with 35mm adjustment
- Stainless steel



Code	Length	Adjustment
776136	200mm	50mm (175-225mm)

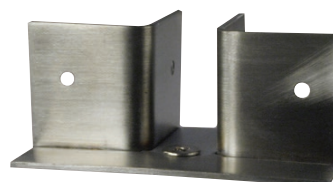


► Toilet Partition Leg Bracket "122"

- T-piece foot bracket
- For use with 776136, to join centre partitions (replacing standard bracket)
- 304-grade stainless steel
- Designed for 18mm board



Code	Finish	Adjustment
776103	Stainless steel	35mm

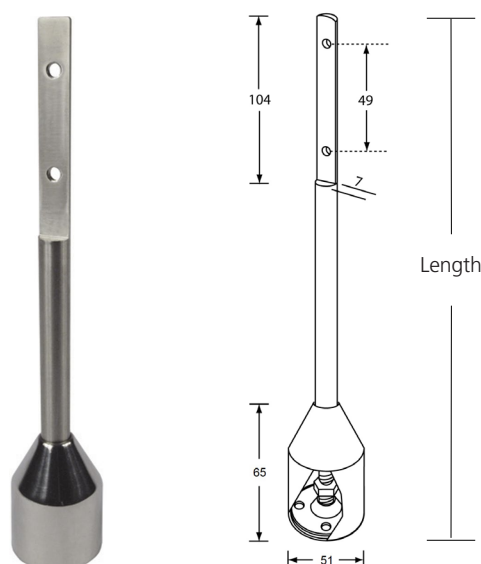


► Toilet Partition Leg "110"

- To create off-floor toilet partitions
- Rebated shaft
- 200mm long with 35mm adjustment
- Suitable for 18mm board or 13mm compact laminate
- 304-grade stainless steel
- For screw-fix or bolt-through (fixings not supplied)



Code	Length	Adjustment
776138	200mm	35mm (182-217mm)



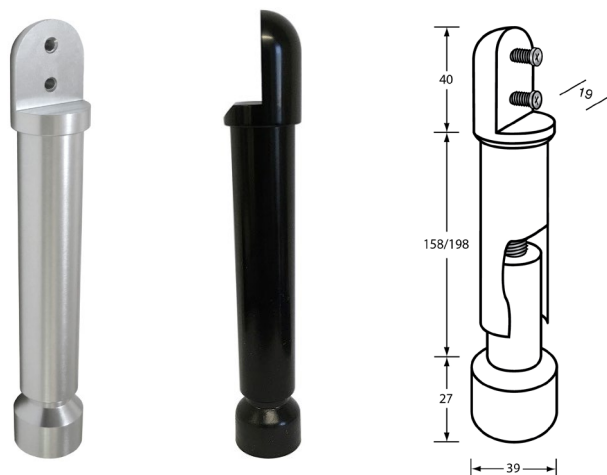
TOILET PARTITION HARDWARE

METLAM TOILET PARTITION LEGS

► Toilet Partition Leg "120"

- Heavy-duty full aluminium
- To create off-floor toilet partitions
- Rebated shaft
- 200mm long with 39mm adjustment (min 186mm, max 225mm)
- Suitable for 18mm board or 13mm compact laminate (screw fixings included)
- Natural anodised finish

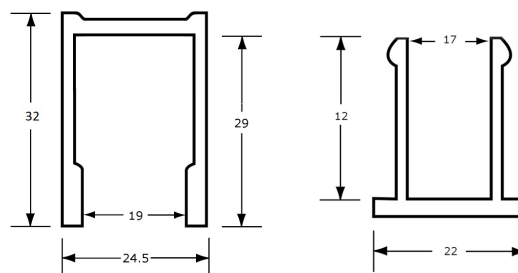
Code	Length	Adjustment
776_120_200_ALU	200mm	39mm (186-225mm)
776_120_200_BLK	200mm	39mm (186-225mm)



METLAM CHANNELS & INSERTS

► Toilet Partition Channels & Inserts – 18mm Board

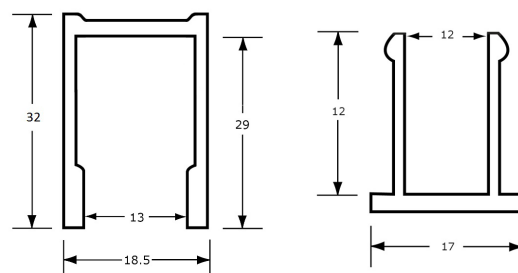
- Anodised aluminium sections for panel ends
- For 18mm board
- Channel
 - U-shape to join panel sections
 - Available in two lengths (1,800mm and 3,600mm)
- Insert
 - To finish off exposed channel above a door
- Satin aluminium finish



Code	Type	Width	Length	Finish
776_WACH18_18	Channel	18mm	1,800mm	Aluminium anodised
776_WACH18_36	Channel	18mm	3,600mm	Aluminium anodised
776_WAINS18_27	Insert	18mm	2,700mm	Aluminium anodised

► Toilet Partition Channels & Inserts – 13mm Compact Laminate Board

- Anodised aluminium sections for panel ends
- For 13mm compact laminate board
- Channel
 - U-shape to join panel sections
 - Available in two lengths (1,800mm and 3,600mm)
- Insert
 - To finish off exposed channel above a door
- Satin aluminium finish



Code	Type	Width	Length	Finish
776_WACH13_18	Channel	13mm	1,800mm	Aluminium anodised
776_WACH13_36	Channel	13mm	3,600mm	Aluminium anodised
776_WAINS13_27	Insert	13mm	2,700mm	Aluminium anodised

TOILET PARTITION HARDWARE

METLAM CHANNELS & INSERTS

► Toilet Partition Channels & Inserts – Designer Black



- Black aluminium sections for panel ends
- For both 18mm standard and 13mm compact laminate board
- Channel
 - U-shape to join panel sections
 - Available in two lengths (1,800mm and 3,600mm)
- Insert
 - To finish off exposed channel above a door
 - Available for 18mm standard board or 18mm compact laminate board
- Designer black

Code	Type	Width	Length	Finish
776_UNICH_36_BLK	Channel	13mm	1,800mm	Designer black
776_WAINS13_27_BLK	Insert	13mm	2,700mm	Designer black
776_WAINS18_27_BLK	Insert	18mm	2,700mm	Designer black



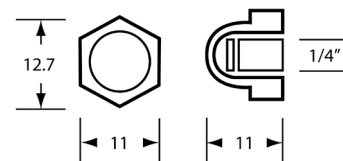
METLAM INSTALLATION ACCESSORIES

► Assembly Fittings – Acorn / D-nuts



- 1/4" BSW thread
- For use with Allthreads and stainless steel face plates for bolt-through fixings
- Satin chrome finish
- Supplied as pack of 20

Code	A	B	Pack Size
776108_20	60	45	20



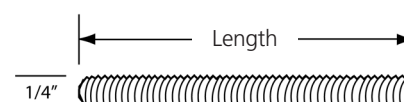
► Assembly Fittings – Allthreads



- Allthreads – 1/4" thread
- For use with acorn d-nuts and stainless steel face plates for bolt-through fixings
- Available in three sizes ex stock to suit different applications
 - 35mm suits 18mm board
 - 38mm suits 18mm with gravity hinges
 - 50mm suits 33mm board
- Supplied as pack of 10



Code	Thread	Length	Pack Size
776110_10	1/4"	35mm	10
776111_10	1/4"	38mm	10
776112_10 ^	1/4"	45mm	10
776113_10 ^	1/4"	50mm	10



^ not stocked, available as special buy-in (longer lead times may apply)

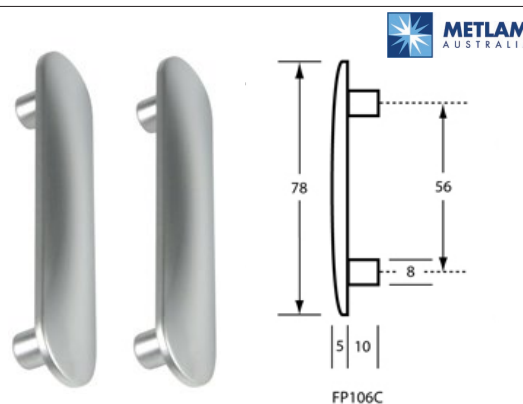
TOILET PARTITION HARDWARE

METLAM INSTALLATION ACCESSORIES

► Gravity Hinge Faceplates

- M5 threaded holes, for use with Allthread
- For bolt-through fixing one of "106" gravity hinge
- 304 grade stainless steel, satin finish
- Supplied as set of two for one hinge

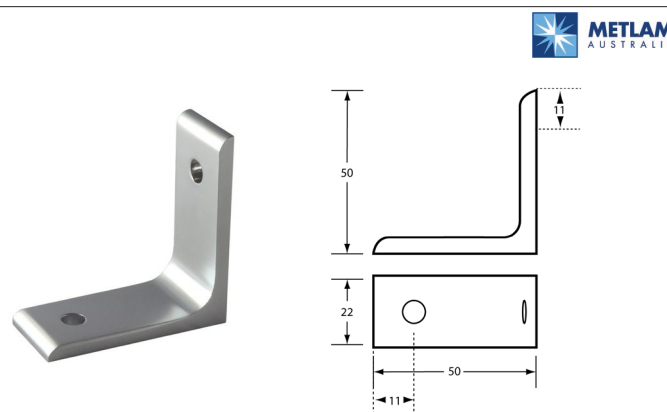
Code	Finish	Packaging
776_FACEPLATE_106C_SCP	Satin chrome-plated	Set of two for one hinge



► Corner Bracket

- Heavy duty, provides additional strength to corners
- Aluminium anodised

Code	A	B	C
776066-AL	50mm	50mm	22mm



► Stainless Steel Hinge Faceplates

- M5 threaded holes, for use with Allthread
- For bolt-through fixing of "106" gravity or "209" stainless steel spring hinges
- 304 grade stainless steel, satin finish
- Supplied as set of four for two hinges

Code	Finish	Packaging
776_FACEPLATE_SS	Satin chrome-plated	Set of four for two hinges



METLAM AMBULANT COMPLIANCE

► Signage

- ABS plastic signs for toilet partition doors
- White infill on blue background for maximum visibility and contrast
- Braille indentation for the vision impaired
- Helps with compliance to AUS standard AS1428.1 for ambulant toilets
 - To provide people with disabilities access to sanitary facilities
- Available as BUYIN with extended lead times



Code	Description	Width	Height	Finish
776_ML96246_BLU ^	"Male Ambulant Toilet"	180mm	180mm	Blue with white infill
776_ML96266_BLU ^	"Female Ambulant Toilet"	180mm	180mm	Blue with white infill
776_ML96304_BLU ^	"Unisex Ambulant Toilet"	210mm	180mm	Blue with white infill

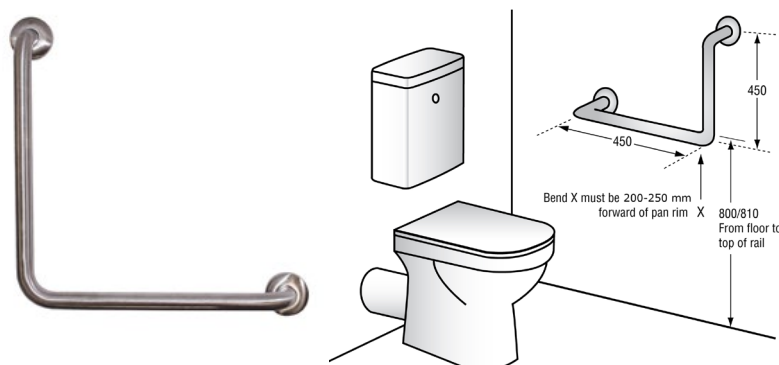
^ not stocked, available as special buy-in (longer lead times may apply)

TOILET PARTITION HARDWARE

METLAM AMBULANT COMPLIANCE

► Grab rail

- Satin stainless-steel grab rail
- #304 grade stainless steel
- Suitable for right-hand or left-hand side installation, 90° bend
- Concealed fix = 78mm diameter twist lock flange covers
- Optional partition fixing plate 776_MLRBT_FXPLATE for bolt-through installation
- Helps with compliance to AUS standard AS1428.1 for ambulant / accessible toilets
 - To provide people with disabilities access to sanitary facilities

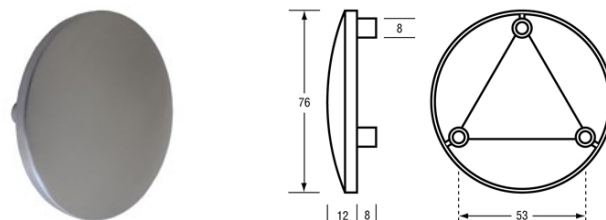


Code	Angle	A	B	Finish
776_MLR112 ^	90°	450mm	450mm	Satin stainless-steel

^ not stocked, available as special buy-in (longer lead times may apply)

► Grab rail fixing plates

- Stainless steel partition fixing plate to suit 776_MLR112
 - Designed for bolt-through installation with M5 threaded bolts
- Concealed fix
- 76mm diameter
- Helps with compliance to AUS standard AS1428.1 for ambulant / accessible toilets
 - To provide people with disabilities access to sanitary facilities
- Supplied as each – two required per grab rail

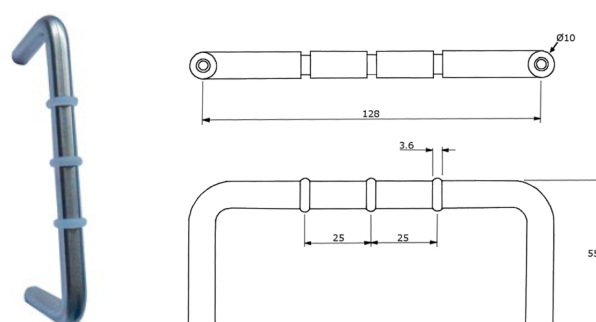


Code	Dia.	Finish
776_MLRBT_FXPLATE ^	76mm	Satin stainless-steel

^ not stocked, available as special buy-in (longer lead times may apply)

► D-Handle

- #304 grade stainless steel D-shaped handle with clear rubber stoppers
 - Rubber stoppers protect walls or partition surfaces from being damaged.
- Surface mount, visible screw-fix from rear
- 55mm protrusion, 45mm inner standoff
- Helps with compliance to AUS standard AS1428.1 for ambulant / accessible toilets
 - To provide people with disabilities access to sanitary facilities



Code	C/C	Length	Finish
776_ML315R ^	128mm	137mm	Satin stainless-steel

^ not stocked, available as special buy-in (longer lead times may apply)

TOILET PARTITION HARDWARE

INDEX PART NUMBERS

Part Number.....	Page
776_120_200_ALU.....	10
776_120_200_BLK.....	10
776_EASYFITLOCK_SCP.....	06
776_FACEPLATE_106C_SCP.....	12
776_FACEPLATE_SS.....	12
776_ML315R ^.....	13
776_ML96246_BLU ^.....	13
776_ML96266_BLU ^.....	13
776_ML96304_BLU ^.....	13
776_MLR112 ^.....	13
776_MLRBT_FXPLATE ^.....	13
776_MODABUMPER_BLK.....	07
776_MODABUMPER_SCP.....	07
776_MODALHINGE_A_BLK.....	04
776_MODALHINGE_A_SCP.....	04
776_MODALHINGE_B_BLK.....	04
776_MODALHINGE_B_SCP.....	04
776_MODALHOOK_BLK.....	08
776_MODALHOOK_SCP.....	08
776_MODALKIT_A_BLK.....	03
776_MODALKIT_A_SCP.....	03
776_MODALKIT_B_BLK.....	03
776_MODALKIT_B_SCP.....	03
776_MODALOCK_BLK.....	06
776_MODALOCK_SCP.....	06
776_UNICH_36_BLK.....	11
776_WACH13_18.....	10
776_WACH13_36.....	10
776_WACH18_18.....	10
776_WACH18_36.....	10
776_WAINS13_27.....	10, 11
776_WAINS18_27.....	10, 11
776037_1.....	04, 05
776038_1.....	04, 05
776039_1.....	04, 05
776040_1.....	04, 05
776043.....	08

TOILET PARTITION HARDWARE

INDEX PART NUMBERS

Part Number.....	Page
776049 ^	07
776052_1	07
776059_SF	07
776066-AL	12
776069.....	08
776103.....	09
776110_10.....	11
776111_10.....	11
776112_10 ^.....	11
776113_10 ^.....	11
776136.....	09
776138.....	09
776245_1.....	04
776250_1.....	04
776255_1 ^.....	04
776260_1 ^.....	04
776305_1.....	05
776310_1.....	05



CABINET HARDWARE SYSTEMS

TOILET PARTITION HARDWARE

Version 1.0

Australia

1800 008 591 ■ www.artia.com.au

VICTORIA:

235 Settlement Road,
Thomastown VIC 3074

NEW SOUTH WALES:

Unit 1/429 Victoria Street,
Wetherill Park NSW 2164

QUEENSLAND:

Building 2/660 MacArthur
Avenue, Pinkenba QLD 4008

SOUTH AUSTRALIA:

13 Rosberg Road,
Wingfield SA 5013

WESTERN AUSTRALIA:

Unit 1B/15 Hector Street,
Osborne Park WA 6017

New Zealand

0800 267 625 ■ www.artia.co.nz

AUCKLAND:

11 Bruce Roderick Drive,
East Tamaki, Auckland 2013

CHRISTCHURCH:

117 Wrights Road,
Addington, Christchurch 8024